



Wall and Frame Brackets



Allied Bolt Products LLC

WALL STRAP

WALL STRAP

| PART# | DESCRIPTION | PKG QTY | CTN QTY | CTN WT. |
|-------|-----------------------|---------|---------|---------|
| 5065 | 1/2" WALL STRAP | 10 | 1 | 27 |
| 5066 | 5/8" WALL STRAP | 5 | 1 | 22 |
| 5068 | SHORT 5/8" WALL STRAP | 10 | 1 | 27 |

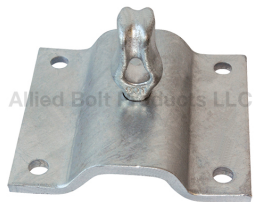
U WALL STRAP



Allied Bolt Products LLC

| PART# | DESCRIPTION | PKG QTY | CTN QTY | CTN WT. |
|-------|----------------|---------|---------|---------|
| 5067 | "U" WALL STRAP | 5 | 10 | 50 |

WALL PLATE STRAP ASSEMBLY



Allied Bolt Products LLC

| PART# | DESCRIPTION | PKG QTY | CTN QTY | CTN WT. |
|-------|---------------------------|---------|---------|---------|
| 901 | WALL PLATE STRAP ASSEMBLY | 10 | 1 | 61 |