



Wall and Frame Brackets



Allied Bolt Products LLC

WALL STRAP

WALL STRAP

| PART# | DESCRIPTION           | PKG QTY | CTN QTY | CTN WT. |
|-------|-----------------------|---------|---------|---------|
| 5065  | 1/2" WALL STRAP       | 10      | 1       | 27      |
| 5066  | 5/8" WALL STRAP       | 5       | 1       | 22      |
| 5068  | SHORT 5/8" WALL STRAP | 10      | 1       | 27      |

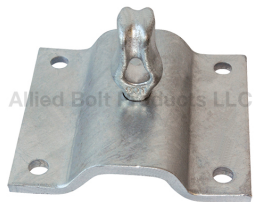
U WALL STRAP



Allied Bolt Products LLC

| PART# | DESCRIPTION    | PKG QTY | CTN QTY | CTN WT. |
|-------|----------------|---------|---------|---------|
| 5067  | "U" WALL STRAP | 5       | 10      | 50      |

WALL PLATE STRAP ASSEMBLY



Allied Bolt Products LLC

| PART# | DESCRIPTION               | PKG QTY | CTN QTY | CTN WT. |
|-------|---------------------------|---------|---------|---------|
| 901   | WALL PLATE STRAP ASSEMBLY | 10      | 1       | 61      |