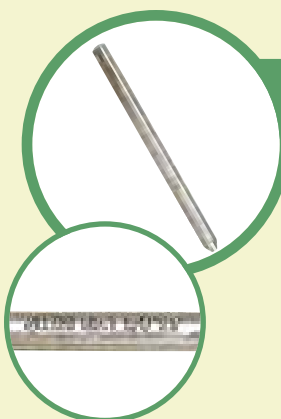


Copper Bonded Ground Rod

- Used as a grounding electrode for buildings and utility poles.
- Manufactured from AISI 1035 Steel.
- Copper is electrically bonded to the entire length of the rod.
- Size of rod, manufacturers mark, and appropriate testing requirement (i.e.: UL Listed) is stamped near the end of each rod for easy identification.
- Steel is drawn before plating for strength and consistency.
- Rod ends are chamfered to prevent “mushrooming” while driving and allows ground clamp to slip over rod after installation.
- Rods that are UL Listed are covered by file number E211717.

PART NUMBER	SIZE	PLATING THICKNESS	BUNDLE QTY
2134*	1/2" x 8'	10 mil.	100
2121	5/8" x 5'	10 mil.	100
2136	5/8" x 6'	10 mil.	100
2137*	5/8" x 8'	10 mil.	100

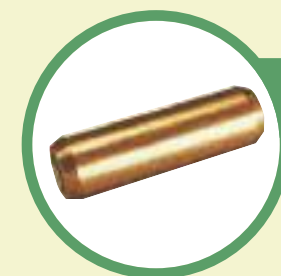
* Denotes UL Listed.



Hot Dipped Galvanized Ground Rod

- Used as a grounding electrode for buildings and utility poles.
- Manufactured from AISI 1035 Steel.
- Size of rod, manufacturers mark, and appropriate testing requirement is stamped near the end of the rod for easy identification.
- Steel is drawn before plating for strength and consistency.
- Meets NEMA and ANSI requirements.
- Rod ends are chamfered to prevent “mushrooming” while driving and allows ground clamp to slip over rod after installation.
- Minimum galvanized thickness is 3.9 mil.

PART NUMBER	SIZE	BUNDLE QTY
2109	3/8" x 5'	100
2110	3/8" x 6'	100
2111	3/8" x 8'	100
2101	1/2" x 5'	100
2113	1/2" x 6'	100
2114	1/2" x 8'	100
2102	5/8" x 5'	100
2116	5/8" x 6'	100
2117	5/8" x 8'	100



Ground Rod Coupling

- Used as a mechanical connection between sectional ground rods.
- Coupling is internally full-threaded.
- Manufactured from high strength bronze.
- Couplings are UL Listed under file number E211717.

PART NUMBER	GROUND ROD COUPLING SIZE	CARTON QTY
875	1/2"	100
876	5/8"	100
877	3/4"	100

Premium Ground Rod Clamp

- Provides a mechanical connection between ground wire and a ground rod.
- Wide flange at bottom of clamp provides increased bearing surface on ground wire.
- Plain bronze Clamps are designed for Cooper Clad Ground Rods, Tin plated Clamps are designed for Galvanized Ground Rods.
- Comprised of a high-strength bronze forging and a silicone bronze hex bolt.
- Part Number 2140 is UL Listed under file number E178438.
- Part Numbers 2141, 2142 and 2182 are UL Listed under file number E211717.



PART NUMBER	SIZE	CONDUCTOR RANGE				BOLT SIZE	CARTON QTY
		Max.	Min.	Max. mm ²	Min. mm ²		
2140	3/8"	4 Str.	10 Sol.	33.5	5.3	5/16"-18 x 5/8"	100
2141	1/2"	2 Str.	10 Sol.	33.5	5.3	3/8"-16 x 3/4"	100
2142	5/8"	2 Str.	10 Sol.	33.5	5.3	3/8"-16 x 3/4"	100
2182	3/4"	1/0 Sol.	8 Sol.	53.3	8.3	3/8"-16 x 3/4"	100

Add "TP" to the end of the part number for Tin plated Clamps.

Economy Ground Rod Clamp

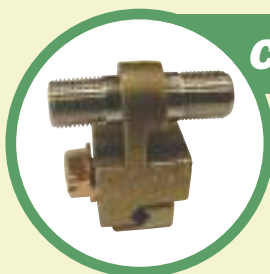
- Provides a mechanical connection between ground wire and a ground rod.
- A dependable ground connection offered at a substantial cost savings.
- Plain bronze Clamps are designed for Cooper Clad Ground Rods, Tin plated Clamps are designed for Galvanized Ground Rods.
- Comprised of a high-strength bronze forging and a silicone bronze hex bolt.



PART NUMBER	SIZE	CONDUCTOR RANGE				BOLT SIZE	CARTON QTY
		Max.	Min.	Max. mm ²	Min. mm ²		
2190	3/8"	4 Str.	10 Sol.	21.1	5.3	5/16"-18 x 3/4"	100
2191*	1/2"	2 Str.	10 Sol.	33.5	5.3	3/8"-16 x 3/4"	100
2192*	5/8"	2 Str.	10 Sol.	33.5	5.3	3/8"-16 x 3/4"	100
2193*	3/4"	2 Str.	10 Sol.	33.5	5.3	3/8"-16 x 3/4"	100

Add "TP" to the end of the part number for Tin plated Clamps.

* Denotes UL Listed for direct burial under file number E211717.



Coaxial Bonding Connector To Power Ground

- Coaxial Bonding Connectors are used to ground a CATV drop at the subscriber's premise. The Connector is attached directly to the common power service ground wire that runs between the ground rod and the electrical service panel. The Connector prevents electricity, which may be present on the aerial or underground drop, from energizing the interior wiring of the home.
- The Coaxial Bonding Connector secures the ground wires firmly without scoring or damaging the conductors.
- By attaching to the common utility ground wire, the need to use additional ground wire and bonding parts is eliminated.
- Clamp body is casted from high strength Silicon Bronze eliminating dissimilar metal issues and improving the clamps electrical characteristics.
- Allied Bolt's premium F-81 has a frequency range of 5 - 3000 MHz, flat F ports, and a tin plated beryllium copper conical seizure mechanism.
- F-81 splices are 1.3" long and are machined from nickel plated brass with $\frac{3}{8}$ " 32 UNEF threads.
- UL Listed under file number E178438.

Frequency (MHz)	5 - 1000	1000 - 2000	2000 - 3000
Insertion Loss	0.1	0.2	0.25
Return Loss	27	23	20

PART NUMBER	DESCRIPTION	CARTON QTY
2546	Coaxial Bonding Connector To Power Ground	50



Single Ground Block

- Used for grounding the CATV system outside of the subscriber's premises.
- Comprised of a stamped bracket, 1GHz F81 Splice, a panel nut and washer.
- Both the low-profile bracket and the standard bracket are offered in 304 Stainless Steel and AISI 1010 Steel.
- Steel brackets are mechanically galvanized to meet ASTM Specification B695.
- UL Listed under file number E178438.

PART NUMBER	DESCRIPTION	CARTON QTY
AB-1M	Single Ground Block Mechanically Galvanized	10
AB-S2	Low Profile Single Ground Block Stainless Steel	25
AB-S1	Single Ground Block Stainless Steel	50

Dual Ground Block

- Used to ground CATV cables outside the subscriber's premises.
- Comprised of a stamped bracket, 1 (or 2) F81 Splice(s), 1 (or 2) panel nut(s) with washer(s), and a ground screw.
- All ground screws are formed from 304 Stainless Steel.
- Steel brackets are stamped from AISI 1010 Steel. Stainless brackets are stamped from 304 Stainless Steel.
- Steel brackets are mechanically galvanized to meet ASTM Specification B695.
- UL Listed under file number E178438.



2 splices
2 ground screws



0 splices
1 ground screw



2 splices
1 ground screw



1 splice
1 ground screw

PART NUMBER	DESCRIPTION	NUMBER OF SPLICES	NUMBER OF GROUND SCREW ATTACHMENTS	MOUNTING SCREWS	CARTON QTY
AB2MGH	Galvanized Dual Ground Block	1	1	YES	50
AB22MGH	Galvanized Dual Ground Block	2	1	YES	50
1703	Galvanized Dual Ground Block	2	2	YES	50
1720	Galvanized Dual Ground Block	0	1	YES	50
1702	Galvanized Dual Ground Block	0	1	NO	100
AB2SGH	Stainless Dual Ground Block	1	1	YES	50
AB22SGH	Stainless Dual Ground Block	2	1	YES	50
1699	Stainless Dual Ground Block	2	2	YES	50

Splitter Nut

- Used to install splitters into ground blocks.
- Machined from solid brass.
- Nickel plated to prevent dissimilar metals from contacting each other.
- Collar of splitter nut is used as a spacer when tightening nut over the unthreaded portion of the splitter.
- $\frac{7}{16}$ " diameter hex for tightening with standard can wrenches.



PART NUMBER	SIZE	CARTON QTY
9010	$\frac{3}{8}$ -32 x .172"	100
9011	$\frac{3}{8}$ -32 x .200"	100
9012	$\frac{3}{8}$ -32 x .225"	100

Ground Wire Tag

- Plastic tag is used to identify telecommunication ground connections.
- Manufactured from Polyethylene.

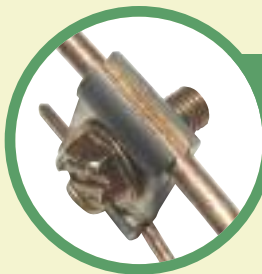


CATV



Phone

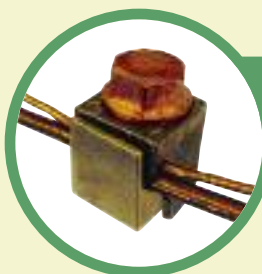
PART NUMBER	DESCRIPTION	CARTON QTY
2530CATV	Ground Wire Tag for CATV	100
2530PHONE	Ground Wire Tag for Phone	100



Parallel Groove Bonding Connector

- Bonding Connectors are used to permanently bond a #6 AWG solid copper ground wire to a #14, 12, or 10 AWG solid copper ground wire.
- The Connector can be installed without disassembly. Simply loosen the Connector, slide over the two ground wires, and tighten.
- Connector halves are stamped from high-strength Bronze Alloy.
- Screw (1/4-28 x 1/2" Slotted Hex Washer Machine Screw) is formed from Silicon Bronze.
- UL Listed under file number E178438.

PART NUMBER	DESCRIPTION	CARTON QTY
1885	Parallel Groove Bonding Connector	50



Bronze Vise Connector

- Used for distribution, service bonding, or tap connections.
- "V" grooves properly align ground wires for maximum engagement.
- Bolt is formed from Silicon Bronze.
- Overlapping "lips" on Connector prevent ground wire from escaping.
- Tight compression on ground wires prevents Connector from loosening under vibration.
- Part Number 862 is UL Listed under file number E178438.
- Part Numbers 868, 869 and 871 are UL Listed under file number E211717.

PART NUMBER	MIN. TWO CONDUCTORS	MAX. TWO CONDUCTORS	CARTON QTY
862	#10 SOL	#6 SOL	50
868	#8 SOL	#4 STR	25
869	#4 SOL	#2 STR	25
871	#2 SOL	2/0 STR	25
874	1/0 SOL	4/0 STR	25



H2



H1

H Connector

- Provides a mechanical means for bonding various sizes of copper ground wire.
- Manufactured from high strength Bronze alloy.
- The H1 Connector bonds a #6-10 AWG to #4-6 AWG ground wire.
- The H2 Connector bonds a #4-12 AWG to #8-1/0 AWG ground wire.

PART NUMBER	SIZE	BELL NUMBER	CARTON QTY
879	H1 Ground Connector	403370075	5
880	H2 Ground Connector	402689244	5

Bronze Vise Connector Spacer Type

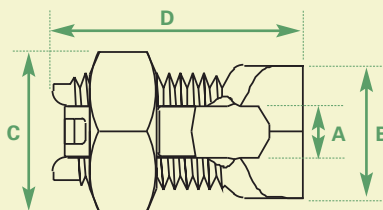
- Used to provide a permanent connection between two ground wires.
- "V" grooves properly align ground wires for maximum engagement.
- Electrolytic spacer bar provides three additional lines of contact between conductors and a short low resistance current path.
- Connector is comprised of three high-strength Bronze castings.
- 304 Stainless Steel Bolt used for maximum corrosion resistance.
- Tight compression on ground wires prevents Connector from loosening under vibration.



PART NUMBER	MIN. TWO CONDUCTORS	MAX. TWO CONDUCTORS	BELL NUMBER	CARTON QTY
878	#8 SOL	1/0 SOL	000204784	50

Copper Split Bolt

- Used to make a bonding connection between two copper ground wires.
- Bolt and nut formed from high-strength corrosion resistant C210 Copper.
- Specially designed pressure bar provides high pull-out strength.
- Under torque, provides high contact pressure between ground wires.
- UL listed under file number E256134.



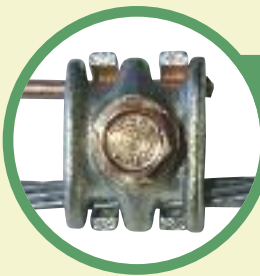
PART NUMBER	SIZE	SMALLEST TWO CONDUCTORS ACCEPTED	LARGEST TWO CONDUCTORS ACCEPTED	MIN. WIRE SIZE THAT CAN BE USED WITH MAX. WIRE SIZE	A	B	C	D	CARTON QTY
852	2	6 Sol.	2 Str.	14 Str.	3/8"	5/8"	13/16"	15/16"	100
853	4	8 Sol.	4 Sol.	16 Sol.	7/32"	1/2"	11/16"	1 1/16"	100
854	6	10 Sol.	6 Sol.	16 Sol.	11/64"	7/16"	5/8"	1 1/64"	100
855	8	16 Str.	8 Str.	16 Str.	9/64"	3/8"	1/2"	7/8"	100

Single Ground Connector

- Used to bond a #10 - 14 AWG ground wire to a #6 AWG ground wire. Often used to bond to the power service ground wire.
- Each connector is comprised of a copper stamping and a brass screw.



PART NUMBER	DESCRIPTION	CARTON QTY
4200	Ground Connector	100



Bonding Clamp

- Used to bond 1/4" and 5/16" galvanized strand to #6 AWG copper ground wire.
- Clamp consists of two mating copper alloy castings and a Silicon Bronze or #304 Stainless Steel bolt.
- Castings are tin plated to prevent dissimilar metals from contacting each other.
- Design allows for installation without disassembly.
- K1 Bonding Clamp has the plating removed from one groove of Clamp.
- K2 Bonding Clamp has the plating removed from both grooves for Copper to Copper bond.
- Part Number 2125 is UL Listed under file number E211717.

PART NUMBER	DESCRIPTION	CARTON QTY
2125	KUL Bonding Clamp	100
2125K1	K1 Bonding Clamp	100
2125K2	K2 Bonding Clamp	100

Type C Ground Connector For Messenger Cable

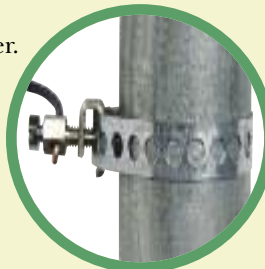


- Used for connecting ground wire to the messenger strand of self-supporting cable. The teeth of the connector penetrate the insulation of the messenger strand to form a positive ground.
- Each connector is provided with a 5/16-18 x 1" #304 Stainless Steel hex bolt.
- C Ground Connector accommodates messenger diameters of .146" to .312".
- C Ground Connector accommodates ground conductors ranging from #8 STR AWG to #4 STR AWG.
- Piercing teeth eliminate the need for wire stripping.
- Connector manufactured from high strength bronze and tin plated to prevent the contact of dissimilar metals.
- UL Listed under file number E211717.

PART NUMBER	DESCRIPTION	BELL NUMBER	CARTON QTY
1025	Type C Ground Connector For Messenger Cable	400127585	200

Premium Ground Strap

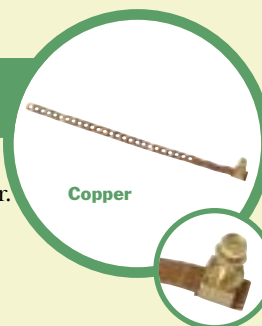
- Provides a permanent connection between a copper water pipe or power service mast and a #14 to #6 AWG ground wire.
- Unique patented design eliminates the need to remove any hardware for installation.
- Raised projections on Strap help penetrate paint and corrosion to form a metal to metal bond. These raised projections eliminate the time consuming task of sanding the surface of the electrode before installing Strap.
- Tab (flapper) is formed with two thicknesses of material, at the end of the Strap, to protect electrode from being punctured during installation.
- Strap is stamped from $\frac{5}{8}$ " x .024" material stock. By using a larger stock size, Premium Ground Straps provide more surface contact for better conductivity.
- Copper Ground Straps are manufactured from dead soft Copper. Galvanized Straps are manufactured from G90 Pre-galvanized Steel.
- Hardware is manufactured from pure brass. Hardware for galvanized straps is nickel plated to prevent dissimilar metals from contacting each other.
- UL Listed under file number E178438.



PART NUMBER	DESCRIPTION	RECOMMENDED FOR PIPES RANGING FROM	CARTON QTY
6 AB	6" Copper Ground Strap	$\frac{1}{2}$ " - 1"	400
9 AB	9" Copper Ground Strap	$1\frac{1}{4}$ " - $1\frac{1}{2}$ "	400
12 AB	12" Copper Ground Strap	2" - $2\frac{1}{2}$ "	200
6 GAB	6" Galvanized Ground Strap	$\frac{1}{2}$ " - 1"	400
9 GAB	9" Galvanized Ground Strap	$1\frac{1}{4}$ " - $1\frac{1}{2}$ "	400
12 GAB	12" Galvanized Ground Strap	2" - $2\frac{1}{2}$ "	200
24 GAB	24" Galvanized Ground Strap	3" - 6"	200

Economy Ground Strap

- Provides a permanent connection between a copper water pipe or power service mast and a #14 to #10 AWG ground wire.
- Strap is equipped with an integral bracket. Bracket is used for engaging screw and opposite end of strap.
- Hardware is sized for installation with a standard $\frac{3}{8}$ " - $\frac{7}{16}$ " Can Wrench.
- Hardware is manufactured from pure brass. Hardware for galvanized straps is nickel plated to prevent dissimilar metals from contacting each other.
- Copper Ground Straps are manufactured from dead soft Copper. Galvanized Straps are manufactured from G90 Pre-galvanized Steel.
- For both Galvanized and Copper Straps stock size is $\frac{1}{2}$ " x .020".
- UL Listed under file number E178438.



Copper



Galvanized

PART NUMBER	DESCRIPTION	RECOMMENDED FOR PIPES RANGING FROM	CARTON QTY
2160	6" Copper Ground Strap	$\frac{1}{2}$ " - 1"	500
2161	9" Copper Ground Strap	$1\frac{1}{4}$ " - $1\frac{1}{2}$ "	500
2162	12" Copper Ground Strap	2" - $2\frac{1}{2}$ "	500
2167	6" Galvanized Ground Strap	$\frac{1}{2}$ " - 1"	500
2168	9" Galvanized Ground Strap	$1\frac{1}{4}$ " - $1\frac{1}{2}$ "	500
2169	12" Galvanized Ground Strap	2" - $2\frac{1}{2}$ "	500



Aluminum



Bronze



Zinc

Pipe Clamp

- Used for bonding ground wire to water pipes or steel conduit.
- Bronze Pipe Clamps are cast from high strength bronze.
- Aluminum Pipe Clamps are extruded from 6063-T6 Aluminum.
- Zinc Clamps are cast from Zinc Alloy.
- Fasteners are manufactured from Grade 2 Steel and zinc-plated.

PART NUMBER	MATERIAL	WATER PIPE RANGE	CONDUCTOR RANGE		CARTON QTY
			Max.	Min.	
965*	Bronze	1/2"-1"	#4 AWG (.204")	#14 AWG (.064")	100
966*	Bronze	1 1/4"-2"	#4 AWG (.204")	#14 AWG (.064")	50
967	Aluminum	1/2"-1"	#4 AWG (.204")	#14 AWG (.064")	100
968	Aluminum	1 1/4"-2"	#4 AWG (.204")	#14 AWG (.064")	50
939*	Zinc	1/2"-1"	#4 AWG (.204")	#14 AWG (.064")	100
940	Zinc	1 1/4"-2"	#4 AWG (.204")	#14 AWG (.064")	50
965DB*	Bronze	1/2"-1"	#4 AWG (.204")	#14 AWG (.064")	100
966DB	Bronze	1 1/4"-2"	#4 AWG (.204")	#14 AWG (.064")	50

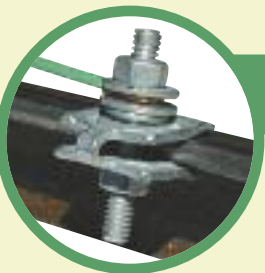
* Denotes UL Listed for direct burial under file number E211717.



Trailer Ground Clamp

- A high-strength bronze casting used to bond ground wire to I-beams and other Steel structures.
- Ground wire may be installed before clamp is fixed on I beam.
- Cup point on screw cuts through paint or oxide for a metal to metal bond.
- Slotted set screw and mounting screw formed from Grade 5 Steel.
- Square head available for high torque installations.
- UL Listed under file number E211717.

PART NUMBER	DESCRIPTION	CARTON QTY
6620HX	Trailer Ground Clamp with Hex Bolt	50
6620SQ	Trailer Ground Clamp with Square Bolt	50



Economy I-Beam Ground Clamp

- Provides an inexpensive means for grounding telephone and CATV systems to an I-Beam.
- Teeth on bracket help penetrate paint and rust to ensure a strong grounding connection.
- All components are formed from Grade 2 Steel.
- Accommodates I-Beams ranging in diameter from 3/16" to 3/4".

PART NUMBER	DESCRIPTION	CARTON QTY
10069	Economy I-Beam Ground Clamp	50

Two Piece Trailer Ground Clamp

- Used to bond ground wire to I beams or other steel structures.
- Clamp is comprised of two mating bronze castings that are tin-plated to prevent corrosion.
- Top and bottom casting have integral teeth to penetrate oxidation or paint for positive ground.
- Ground Stud accepts #14-#6 SOL ground wire.
- Ground stud and mating screw formed from Brass and nickel plated to prevent dissimilar metal contact.
- UL Listed under file number E211717.



PART NUMBER	DESCRIPTION	BELL NUMBER	CARTON QTY
9840	Two Piece Trailer Ground Clamp	000213140	10

Grounding Tap Bracket

- Used to mount a tap and to provide a ground connection for up to a #6 AWG ground wire.
- Bracket height is $\frac{3}{4}$ " to provide adequate clearance for installing taps in MDU boxes.
- Overall length of bracket is $6\frac{1}{2}$ ".
- Stamped from 304 Stainless Steel.
- Center mounting hole is .446".



PART NUMBER	DESCRIPTION	STOCK SIZE	MOUNTING HOLE DIA.	CARTON QTY
2150	Tap Bracket with Ground Lug	.048 x 1"	$\frac{9}{32}$ "	100

B Ground Wire Clamp

- Used to secure #6 AWG through #12 AWG ground wire runs.
- Stamped from AISI 1018 Steel.
- Mechanically galvanized to meet ASTM Specification B695.
- $\frac{7}{32}$ " Screw hole (accommodates #8 - #12 Screws).



PART NUMBER	DESCRIPTION	STOCK SIZE	CARTON QTY
9050	B Ground Wire Clamp	.035 x $\frac{3}{8}$ "	500

Ground Wire Nail

- Used to fasten #6-14 AWG ground wire to woodwork.
- Ground Wire Nails come with a diamond shaped point for easy installation.
- Formed from AISI 1018 Hardened Steel.
- Zinc Plated to meet ASTM Specification F1941.



PART NUMBER	SIZE	BELL NUMBER	PIECES PER LB.	CARTON QTY
739	$\frac{7}{8}$ "	400162244	561	1 lb.
740	$1\frac{3}{8}$ "	400162251	275	1 lb.



Corner Bonding Connector for Meter Box

- Provides a bonding connection between the metallic frame of a meter box and a copper ground wire.
- Includes a self-leveling mechanism to adjust for irregularities on sides of meter box.
- Connector's mounting screw has a special cutting tip that pierces through hard finishes (i.e. powder coating).
- Provides a fixed and positive mechanical contact without interfering with the opening of the meter box.
- All fasteners are constructed from Type 304 Stainless Steel.
- UL Listed under file number E211717.

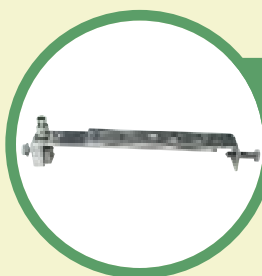
PART NUMBER	DESCRIPTION	ACCOMMODATES GROUND WIRE SIZES	CARTON QTY
856	Corner Bonding Connector for Meter Box	#14 - 10 AWG Sol	100



Plate Style Meter Box Connector

- Used as a permanent bonding connection between a #10 - #14 AWG ground wire and a meter box.
- Ground wire insertion holes eliminate the need to pre-form a ground wire loop before attaching to Connector.
- Stamped projections on face of Connector retain ground wire and eliminate the need for a wire retaining washer.
- Mounting screws feature a special cutting tip that pierces through hard finishes (i.e. powder coating).
- Stamped from Type 304 Stainless Steel and passivated for extended life.
- Fasteners are formed from Type 304 Stainless Steel to prevent a dissimilar metal reaction.
- Does not interfere with the opening of the meter box.
- UL Listed under file number E211717.

PART NUMBER	DESCRIPTION	CARTON QTY
3301	Plate Style Meter Box Connector	50



Bracket Style Meter Box Connector

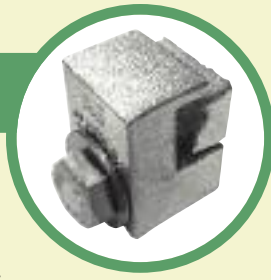
- Provides a permanent bonding connection between a #14 - #6 AWG ground wire and a meter box.
- By tightening the ground lug, the grounding block scrapes the paint at multiple sites to provide a metal/metal ground connection.
- Two interlocking stampings are formed from AISI 1018 Steel.
- The machined ground block and fasteners are formed from 304 Stainless Steel.
- Steel Brackets are mechanically galvanized to meet ASTM Specification B695.

PART NUMBER	DESCRIPTION	CARTON QTY
3305*	Short (7" to 10 ¹ / ₄ ") Bracket Style Meter Box Connector	50
3306*	Long (11 ¹ / ₂ " to 15 ¹ / ₄ ") Bracket Style Meter Box Connector	50
3307	Extra Long (14" to 22") Bracket Style Meter Box Connector	25
3308	Extended (22" to 30") Bracket Style Meter Box Connector	25

* Denotes UL Listed for direct burial under file number E211717.

Bonding Ribbon Connector

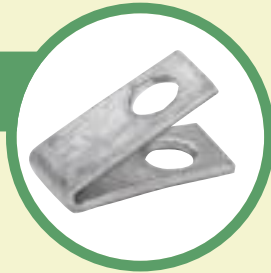
- Used to bond a #6SOL AWG ground wire to plain bonding ribbon.
- Accepts a maximum of three bonding ribbons and one #6 ground wire.
- Connector is comprised of two mating high strength bronze castings.
- Castings are tin plated for corrosion resistance and to prevent dissimilar metal contact.
- 1/4-28 Connecting Screw formed from high strength Silicon Bronze.
- UL Listed.



PART NUMBER	DESCRIPTION	BELL NUMBER	CARTON QTY
2536	Bonding Ribbon Connector	400127589	50

Bonding Ribbon Clamp

- Used to secure bonding ribbon to manhole walls and roofs.
- Stamped from Lead Antimony.



PART NUMBER	DESCRIPTION	BELL NUMBER	CARTON QTY
2532	Bonding Ribbon Clamp	400121364	50



Aluminum

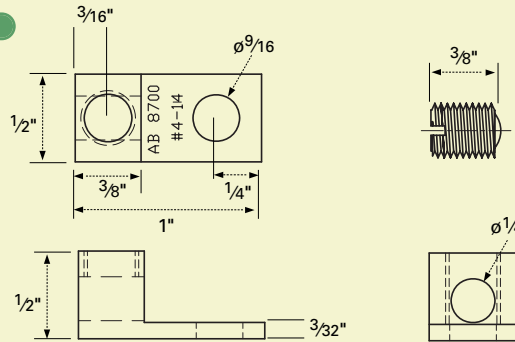


Bronze

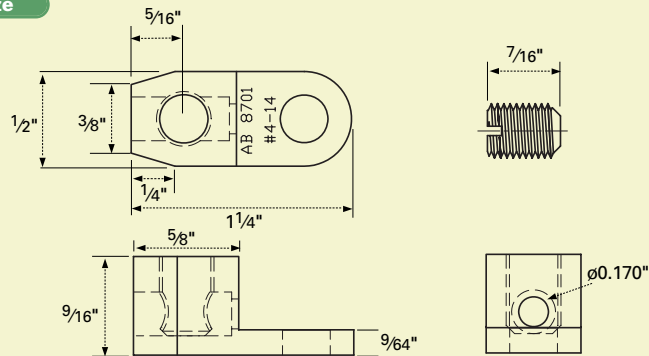
Terminal Lug

- Used to mechanically bond ground wire to equipment.
- One hole on front of connector for attaching ground wire.
- Accepts ground wire ranging from #14 - #4 AWG
- Mounting hole accommodates 1/4" stud.
- Body constructed from high strength Aluminum or Bronze alloy .
- Set screw is installed with a flat head screwdriver.

Aluminum



Bronze



PART NUMBER	DESCRIPTION	CARTON QTY
8700	Aluminum Terminal Lug	50
8701	Bronze Terminal Lug	100



Desired Grounding Locations

